



DURSIL 5-10

**Flush monolithic flooring.
Standard UNI 11146 - Chapter 4.4**

DESCRIPTION

High strength flush monolithic floor with concrete load bearing plate.

Application Terminology: "Facing" obtained by applying an anti-wear surface layer as a mortar of approx. 10mm on DURSICAL 5-10 concrete layer of between 5 and 10cm thickness.

WHERE IT IS APPLIED

Flush monolithic flooring. Welded to the concrete load bearing plate. Suitable for loads (II) and operations (M-P) (See DIN Standard 1100).

Heavy industry, intensive warehousing, workshops etc..

STRENGTHS

It is a long lasting, hard wearing flooring which is easy to maintain.

WEAKNESSES

Any issues may be caused by:

- 1) Inadequate consistency or bearing of the existing concrete slab.
- 2) A failure to plan for the appropriate thickness, type of concrete and reinforcement used. (premature wear, damage to construction joints, cracks in the slabs).
- 3) Failure to use **DURSICAL** 5-10 concrete (crumbling, pitting, cavities, cracked state and warping.)

NOTE

The floor may be smoothed and coloured.

The surface may be treated with **COVERSIP** (part of the **CHEMIDUR** range) neutral or coloured, with dust free, waterproof and shine coating.



SPECIFICATION FOR THE DESIGN

DURSIL 5-10 monolithic industrial flooring comprising:

A) SURFACE LAYER

A mixture based on spheroidal quartz and hard minerals with the addition of special binders, with a homogeneous granulometric curve of between 0.125 - 3.0mm in ratio of 10-12 kg per m².

Mixed with water and with 7Kg of cement per m². The compound is applied as mortar on fresh concrete and then finished.

B) Levelling concrete plate

DURSICAL 5-10 concrete plate with a thickness of between 5 and 10cm. (Formulated, reinforced concrete to achieve the performance expected by the design of the project. Resistance, durability and controlled shrinkage are basic elements of DURSICAL. Thickness and reinforcement requires a design project.

C) EXISTING CONCRETE PLATE

Existing cured concrete plate. Cleaned of any impurities using mechanical equipment that roughens the surface.

D) SUPPORTING BASE

Soil stabilised using the Westergaard method.

DURSIL 5-10 MONOLITHIC FLOORING TECHNICAL DATA SHEET

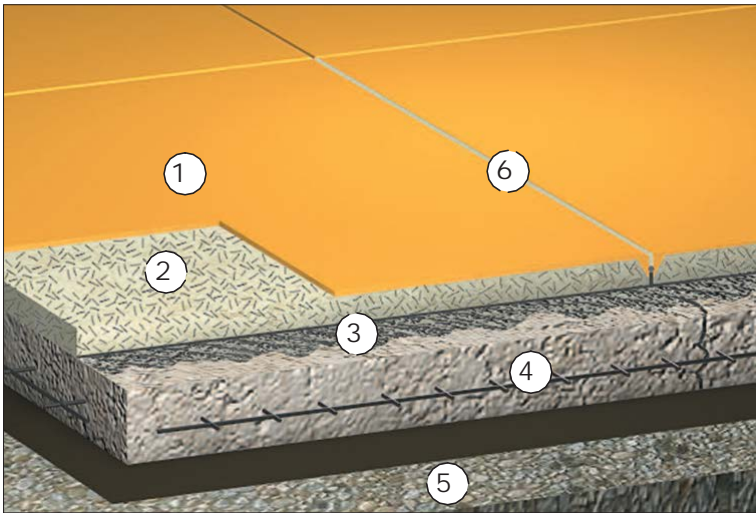
SUPPORTING CONCRETE PLATE

Clean the plate using mechanical equipment to roughen the surface.

FLOORING COMPOSITION

- 1) **DURSIL 5-10 Surface layer of approx. 10mm.**
- 2) **DURSICAL 5-10 reinforced concrete plate of 5 to 10cm.**
- 3) **Supporting concrete plate**
- 4) **Stabilised load bearing soil**

Load bearing weight of the flooring with respect to the project is variable from 5,000 to 10,000kg/m² with a static load. The surface layer is applied to the plate as "Fresh on Fresh" using a mortar method. The contraction joints are carried out use a mechanical cut of ordinary dimensions of ml 3 x 3 and filled with PVC or sealed with resin. The flooring must be isolated from elevated structures.



1) DURSIL 5-10 anti- wear surface layer.
2) DURSICAL 5-10 Reinforced concrete plate according to the project.
3) Encourages adhesion to the existing concrete plate.
4) Mechanical equipment to roughen the surface of the concrete plate.
5) Stabilised soil
6) Joint sealed

DURSIL 5-10	DURSICAL 5-10	ENCOURAGES ADHESION	SUPPORT	JOINT
Compression \leq kg/cm ² 870 Torsion \leq kg/cm ² 120 Usage \leq 3,5 cm ³ /50 cm ²	Concrete \geq RC 40 fibre reinforced depending on the project	Application of appropriate adhesion primer	CONCRETE PLATE existing, load bearing roughened and clean	Sealing the joints sawn with the application of filler cord and filled with resin (surcharge)

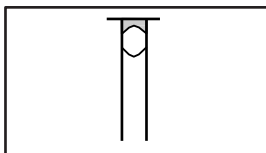
SURCHARGES

A surcharge is charged for the following colours: Red, white, black, brown, green.
 COVERSIP Surface treatment (part of the **CHEMIDUR** range) neutral, coloured, added shine.

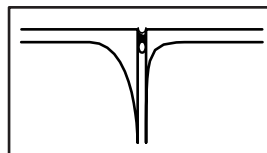
CONSTRUCTION JOINTS

The following construction joints may be used to enhance the use and performance of the flooring, for an additional charge:

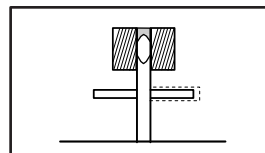
- 1-2 Resin sealed contraction joint, construction joint in cement and quartz mortar.**
- 3-4 Construction joint using metal joints applied at the time the floor is laid.**



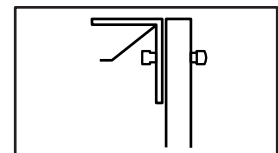
1 - Joint SR



2 - Joint RC



3 - Joint TM/P



4 - Joint MF

S.I.P.I. Nord S.r.l.

100191 Roma - Corso Francia 183 - Tel. +39 06 36381299 - Fax +39 06 36382132

www.sipierl.it - E-mail: info@sipierl.it

All data contained in this brochure are supplied for information purposes only. Therefore they are not binding in any way our company, which reserves the right to modify its products. Each contract will be specifically evaluated, from time to time, to ensure the suitability and specifications of the products in relation to their specific use.

Copyright Sipi Nord. The reproduction of data and drawings is strictly prohibited.